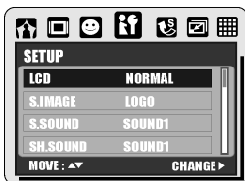
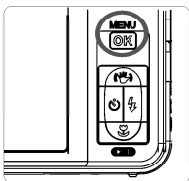


SETUP Setting

General Introduction



- | | | |
|----------------|----------------|---------------|
| 1. LCD | 6. Q. VIEW | 11. FILE |
| 2. S. IMAGE | 7. PWR SAVE | 12. RESET ALL |
| 3. S. SOUND | 8. IMPRINT | 13. USB |
| 4. SH. SOUND | 9. DATE & TIME | 14. VIDEO |
| 5. SYS. VOLUME | 10. LANGUAGE | 15. FORMAT |

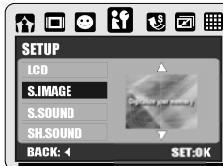
LCD (Default: NORMAL)



There are 3 options of the LCD brightness to select DARK, NORMAL and BRIGHT.

1. DARK
2. NORMAL
3. BRIGHT

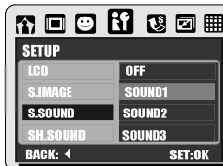
START-UP IMAGE



- The camera has the space for default start-up image or user start-up images. To set up the start-up image, please following the steps below.
1. Press OK/Menu Button and choose "SETUP".
 2. Choose "S. IMAGE".
 3. Select the image you prefer and press OK/Menu Button to confirm the setting. Or you can select "OFF" to not have a start-up image.

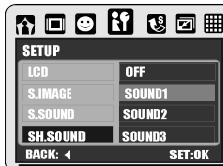
To set an image as a user start-up image option, please refer to "Resize under Playback Mode".

START-UP SOUND (Default: SOUND1)



- To set up the Start-up sound please follow the steps below.
1. Press OK/Menu Button and choose "SETUP".
 2. Choose "S. SOUND".
 3. Select the sound you prefer and press OK/Menu Button to confirm the setting. Or you can choose "OFF" to turn off the a start-up sound.

SHUTTER SOUND (Default: SOUND1)

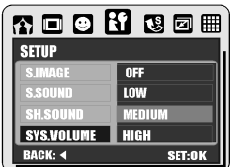


- To set up the shooting sound please follow the steps below.
1. Press OK/Menu Button and choose "SETUP".
 2. Choose "SH. SOUND".
 3. Select the sound you prefer and press OK/Menu Button to confirm the setting. Or you can choose "OFF" to turn off the shooting sound.

24

SETUP Setting

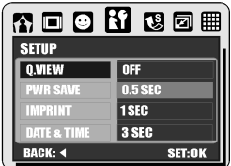
SYSTEM VOLUME (Default: MEDIUM)



- To set up the System sound please follow the steps below.
1. Press OK/Menu Button and choose "SETUP".
 2. Choose "SYS. VOLUME".
 3. Select the sound volume you prefer and press OK/Menu Button to confirm the setting. Or you can choose "OFF" to turn off System sound.

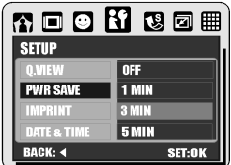
Note: The system sound includes the start-up sound and shooting sound.

QUICK VIEW (Default: 0.5 SEC.)



- To set up the quick view time please follow the steps below.
1. Press OK/Menu Button and choose "SETUP".
 2. Choose "Q. VIEW".
 3. Select the time you prefer and press OK/Menu Button to confirm the setting. Or you can choose "OFF" to have no Quick View Time.

POWER SAVE (Default: 3 MIN.)



- To set up the power saving time please follow the steps below.
1. Press OK/Menu Button and choose "SETUP".
 2. Choose "PWR SAVE".
 3. Select the time you prefer for the power saving and press OK/Menu Button to confirm the setting. Or you can choose "OFF" to not have the power saving function.

Note: If it is set at "OFF", the camera will not turn off automatically. The battery may get drained soon if the camera is being on for a long time.

IMPRINT (Default: OFF)



- This function allows you to print the date or date & time on the image.

DATE & TIME



- This function allows you to choose the type of the date & time.

LANGUAGE

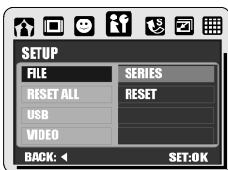


- There are 12 languages available to choose which are English, Japanese, French, German, Spanish, Italian, Turkish, Russian, Thai, Portuguese, Simplified Chinese and Traditional Chinese.

25

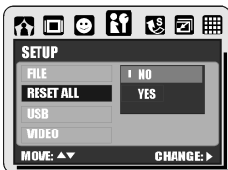
SETUP Setting

FILE (Default: SERIES)



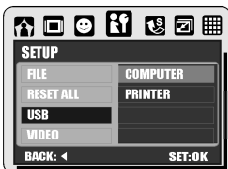
- + This setting allows you to name the files.
- + If RESET is selected, the next file name will be set from 0001 even after formatting, deleting all, or inserting a new memory card.
- + If SERIES is selected, the file name will directly follow the latest stored file name instead.

RESET ALL (Default: No)



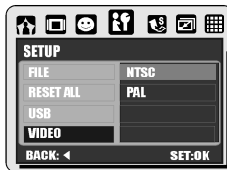
- + This option provides the function of recalling all default values except the Date, Time, Language, and Video Out.

USB (Default: COMPUTER)



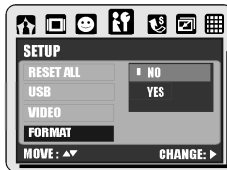
- + With the connection of the printer for PictBridge function, you have to select the option of printer for correct driver support.

VIDEO



- + NTSC: U.S.A. Canada, Japan, South Korea Taiwan, Mexico, .
- + PAL: Australia, Austria, Belgium, China, Denmark, Finland, Germany, U.K., Holland, Italy, Kuwait, Malaysia, New Zealand, Singapore, Spain, Sweden, Switzerland, Thailand, Norway.

FORMAT (Default: No)



- + This function allows you to format the memory card or the built-in flash memory.

Note:

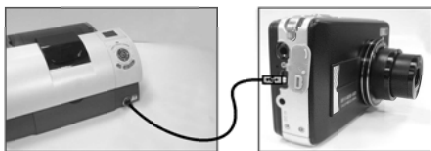
All the data stored in the memory card or flash memory will be deleted after the formatting

26

PictBridge Mode

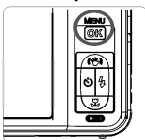
PICTBRIDGE MODE

If the printer you have supports the interface of PictBridge, then you can have your camera connected with the printer by the supplied USB cable to have the stored images print out directly.



1. Have both the camera and the printer powered on.
2. Press the Menu/OK Button to go to SETUP Mode.
3. Go to USB and select PRINTER for printer connection.
4. Use the supplied USB cable to connect the camera to the PictBridge-supported printer as shown above.

Select pictures to print



Operation Steps
1. OK / MENU
2. P or 4
3. OK / MENU



[ONE PIC]: The PictBridge function will be applied only to the picture currently displayed.

[ALL PICS]: The PictBridge function will be applied to all pictures.

Setting the Number of Copies to Print

1. Select [ONE PIC] or [ALL PICS]. A screen where you can set the number of copies to print will appear as shown above.
2. Press the Up/Down Button to select the number of prints. Maximum 30 prints.
3. Use the Left/Right Button to select another picture and select the number of prints for another picture.
4. After setting the number of prints, press the Menu/OK Button to save.
5. Press the Shutter Button to return to the menu without setting the number of prints.

AUTO SET



- + [YES]: All values in the [CUSTOM SET] are automatically changed.
- + [NO]: [CUSTOM SET] values are kept.

CUSTOM SET



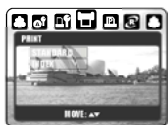
- + You can select the Paper Size, Print Format, Paper Type, Print Quality, Date Print, and File Name Print menus for printed pictures.

SIZE	Sets the size of the printing paper
LAYOUT	Sets the number of pictures to be printed on a sheet of paper
TYPE	Sets the type of the printing paper
QUALITY	Sets the quality of the picture to be printed
DATE	Sets whether to print the date
FILE NAME	Sets whether to print the file name

27

PictBridge Mode

PRINT



[STANDARD]:
Print the pictures stored in the memory card in set number. Each picture will be printed on one piece of paper.

- + [INDEX]:
Print multiple images on one sheet of paper.
Please press OK/Menu Button to stop printing

RESET



This function allows you to initialize user-changed configurations.

[YES]: All print and image settings will be reset back to the default

- + [NO]: Settings will not be reset.

All default printer settings are based on the those of the printer manufacturer.

DPOF PRINT



This allows you to directly print the files with DPOF information.

[YES]: Directly print the file with the DPOF information

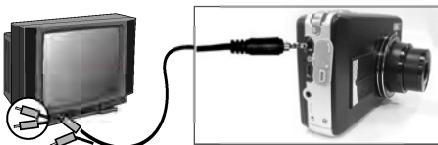
[NO]: Cancel the printing

- + Depending on the manufacturer and printer model, some menus may not be available.
- + If the camera is connected to a printer without supporting the DPOF, the menu is still displayed but the function is not available.

28

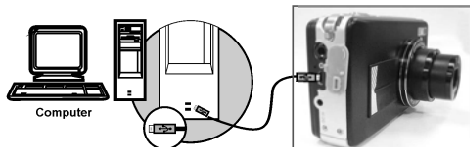
TV / PC Connection

General Introduction



- + Connect the USB/Video connector of the camera to video input ports of the TV set with the supplied Video/USB Cable.
- + Turn on the TV and switch the TV/Video switch to A/V Mode
- + Power on the camera and then switch to the Playback Mode
- + Press down the LEFT or RIGHT direction Button to go to the next or last image for TV reviewing.

Computer / Notebook Connection



- + When the USB/Video Cable is in connection with the computer while the camera is on, the camera will automatically go to the PC Mode from any working mode and turn off TFT LCD monitor.

- + In this Mode, you can download images to your computer.

29

Software Application

ArcSoft MediaImpression™

1 Introduction



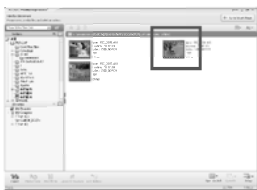
Manages your media for you, and gives you tons of fun and exciting ways to create and share projects featuring your photo and video. Create your own movies or photo slide shows, complete with soundtrack; edit, enhance, and add fun creative effects to your photos and share your files easily through simple email attachments or popular photo printing and video sharing websites!

2 Browse your photo files



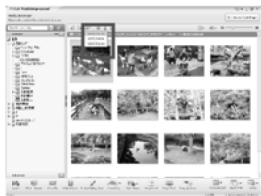
1. Open ArcSoft MediaImpression and then click on "Pictures".
2. Select the photo that you would like you browse.

3 Browse your video files



1. Open ArcSoft MediaImpression and then click on "Videos".
2. Select the Video that you would like you browse.

4 Photo Convert:



1. Select photo you prefer to convert .
2. Click on "Batch", then choose "Batch Convert".

Photo Convert



3. Select photo you prefer to convert .
4. Click "Convert" to make photo convert .
(Please select JPEG as file format ; otherwise the file cannot play correctly.)

5 Video Convert



1. Select video you prefer to convert .
2. Click on "Make Movie", then choose "Batch Convert".

30

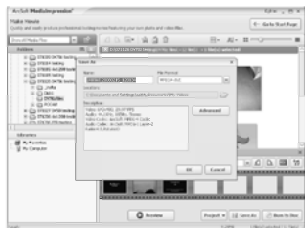
Software Application

Video Convert



3. Select "Save AS" to convert

6 Default of File Format



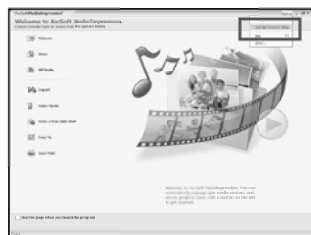
Click "OK" to finish convert .
(The default of file format is MPEG4-AVI. If you change setting of Advanced, the video cannot play correctly.)

Easy Link With YouTube by ArcSoft

1 Click "Extra"



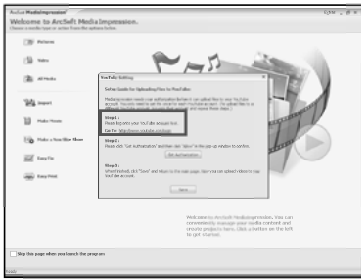
2 Choose "YouTube Account Setup"



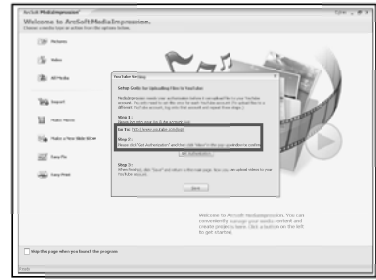
31

Software Application

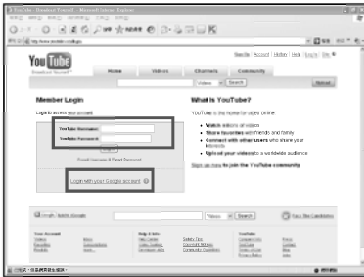
- 3** Choose 'Step 1' to log-in YouTube account



- 5** Choose 'Step 2' to get authorization



- 4** Choose "You Tube Account" or "Google Account" to log-in



- 6** Click "Allow" to get permission



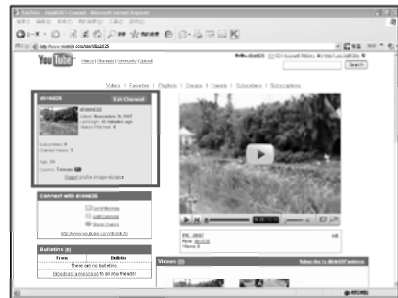
32

Software Application

- 7** User will see " User Name "after log-in



- 9** 1. Watch your video in YouTube after upload




- 8** 1. Choose file that you like to upload
2. Click " Upload to YouTube "



33

Appendix

▶ Error Message Table

Messages	Causes	Solutions
CARD FULL	There is insufficient card memory capacity for storing an image.	Delete the stored image(s) in the memory card or insert a new memory card.
MEMORY FULL	There is insufficient internal memory capacity for storing an image.	Delete the stored image(s) in the flash memory.
CARD LOCKED (ICON BLINKING)	The memory card is under protection.	Set the card protection switch at non-protection position.
LOCK	The Image can not be deleted under protection.	Unlock the protected image.
NO IMAGE	There is no image stored in the memory card or built-in flash memory.	
FILE ERROR	File format error.	Insert a new memory card or format the built-in flash memory.
MEMORY ERROR	Memory is damaged or fails.	Format the memory card or built-in flash memory.
CARD ERROR	Card is damaged or fails.	Insert a new memory card.
LOW BATTERY ! (ICON BLINKING)	Battery power is drained.	Insert a new battery.
LOW LIGHT!	The environment is too dark in Flash off or "Night Scene".	Set the flash mode at Auto Flash or Fill-in Flash.
HAND SHAKE ICON 	The environment is too dark in Flash off or "Night Scene".	Avoid shake. Set the flash mode at Auto Flash or Fill-in Flash.
NO PAPER!	Paper has run out.	Please put more paper in the paper tray of the Printer.
Camera Hangs		1. Remove the battery. 2. Reload the battery. 3. Switch on the camera.

34

Appendix

▶ Specifications

Specifications		
Image Sensor	Type	12 Mega Pixels, 1/1.72" CCD Sensor
	Effective Pixels	Approx. 12.19 Mega Pixels (4,032 × 3,024)
	Total Pixels	Approx. 12.43 Mega Pixels (4,088 × 3,040)
Lens	Lens Type	Optical 3x Zoom (35–102mm EQ. for 35mm film)
	F No.	F2.8 (Wide), F5.1 (Tele)
	Digital Zoom	Still Image mode: 1.0X ~ 5.0X Play mode: 1.0X ~ 8X (depends on image size)
LCD Display		3.0" Color TFT LCD
Focusing	Type	Auto Focus, Face Recognition AF
	Range	Wide: 10cm ~ ∞, Tele: 50cm ~ ∞
Shutter	Type	Mechanical Shutter and Electrical Shutter
	Speed	Normal: 2 sec. 1/2000 sec., Night mode: 8 sec. 1/2000 sec.
Exposure	Control	Programmed AE
	Metering	Multi, Spot
	Compensation	±2EV (0.5EV steps)
Flash	ISO Equivalent	Auto, 100, 200, 400, 800, 1600, 3200
	Modes	Auto, Auto & Red-eye reduction, Fill-in flash, Slow sync, Flash off
	Range	Working range: 0.25-3.2m (Wide), 0.5-1.8m (Tele)
Recharging Time		Approx. 8 sec.
Sharpness		Soft, Normal, Vivid
Effect		JPEG (DCF), EXIF 2.2, DPOF 1.1, PictBridge 1.0
White Balance		Auto, Daylight, Cloudy, Fluorescent, Tungsten, Sunset, Custom
Voice Recording		Voice Recording (depends on capacity) Voice Memo in Still Image (max. 10 sec.)
Date Imprinting		Date, Date & Time, Off (user selectable)
Shooting	Still Image	Single Image, Continuous Shooting
	Image Size	14M: 1344x3553 pixels (Interpolation) 12M: 4000x3000 pixels, 8M: 3648x2448 pixels, 3M: 2048x1536 pixels, 1M: 1280x960 pixels
	Self-Timer	10sec., 2sec., Double
Preview		30 fps with Normal Light Level
Red-Eye Removal		Supported
Face Detection		Automatically finds faces and optimizes focus, AWB and exposure.
Video Stabilization		Supported
Movie Clip	Movie Size	HD Video: 1280x720, TV: 640x480, Web: 320x240
	Frame Rate	30fps
	Zoom	Optical Zoom: up to 3.0X
Photo Frame		9 options

Photo Frame		9 options
Storage	Media	Internal memory: 32MB flash memory (Usable memory capacity: 16MB) External memory: MMC/SD (up to 8GB, SD-1C supported)
	File Format	Still Image: JPEG (DCF), EXIF 2.2, DPOF 1.1, PictBridge 1.0 Movie Clip: MOV (MPEG-4 SP)
	Audio	Audio for Voice Recording and Memo: WAV
Playback Function	Type	Single image, Thumbnails, Slide show, Movie Clip, Slide show with Effect
	Editing	Trimming, Resizing, Rotation
Interface		Digital output connector: USB 2.0 (High-Speed) AV output: NTSC, PAL (user selectable) with Audio output DC power input connector (DC5V/1A) MIC input
Power Source		NP40 Lithion Battery
Dimensions (WxHxD)		95.4 x 54.9 x 23.9 mm
Weight		Approx. 136g (Without Battery and Card)
Software	Camera Driver	Mass Storage Driver (Vista/2000/MEX/P, Mac OS 10.0 ~ 10.3)
	Application	Arcsoft Media Impression, Quick Time 7.2 (Windows, XP/Vista)
System Requirements		
For Windows		Pentium III 1GHz or equivalent Windows 2000/Windows XP /Windows Vista Minimum 512MB RAM 150MB or available hard-disk space USB port (1.1 or 2.0 Standard interface) 800x600 pixels, 16-bit color display compatible monitor (24-bit color display recommended)
For Macintosh		Power PC G4 800MHz processor or Intel processor Mac OS 10.3-10.4 Minimum 512MB RAM 150MB or available hard-disk space USB port 800x600 pixels, 16-bit color display compatible monitor
Quick Time 7.2 System Requirements (720P Movie Playback)		
For Windows		Pentium 4 2.4GHz (recommend 3.6GHz) Windows XP Service Pack 2 or Vista Memory: 1G (recommend 2G) DVD-ROM 4G or above HDD capacity
For Macintosh		Power PC G5 dual 2.3GHz or above Mac OS X v10.3.9, v10.4.9 or later Memory: 2GB or above DVD-ROM

Specification and product design are subject to change without any notice for further improvement

35