



## Printer Connection (PictBridge Mode)

### Select pictures to print

**Operation Steps**

1. MENU
2. ▲ or ▼
3. ▶
4. ▲ or ▼
5. OK



- + [SELECT]: The PictBridgefunction will be applied only to the picture currently displayed.
- + [ALL PICS]: The PictBridge function will be applied to all pictures.
- + **Setting the Number of Copies to Print**
  1. Select [SELECT] or [ALL PICS]. A screen where you can set the number of copies to print will appear as shown above.
  2. Press the Up/Down Button to select the number of prints. Maximum 30 prints.
  3. Use the Left/Right Button to select another picture and select the number of prints for another picture.
  4. After setting the number of prints, press the OK Button to save.
  5. Press the Shutter Button to return to the menu without setting the number of prints.



## Printer Connection (PictBridge Mode)

### AUTO SET

**Operation Steps**

1. MENU
2. ▲ or ▼
3. ▶
4. ▲ or ▼
5. OK



- + [YES]: All values in the [CUSTOM SET] are automatically changed.
- + [NO]: [CUSTOM SET] values are kept.

### CUSTOM SET

**Operation Steps**

1. MENU
2. ▲ or ▼
3. ▶
4. ▲ or ▼
5. ▶
6. ▲ or ▼
7. OK



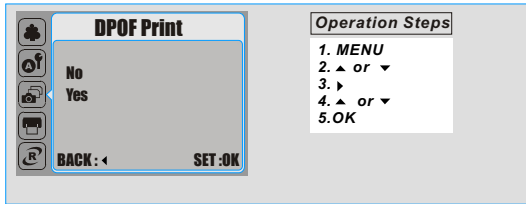
You can select the Paper Size, Print Format, Paper Type, Print Quality, Date Print, and File Name Print menus for printed pictures.

SIZE	Setting the size of the printing paper
LAYOUT	Setting the number of pictures to be printed on a sheet of paper
TYPE	Setting the type of the printing paper
QUALITY	Setting the quality of the picture to be printed
DATE	Setting whether to print the date
FILE NAME	Setting whether to print the file name



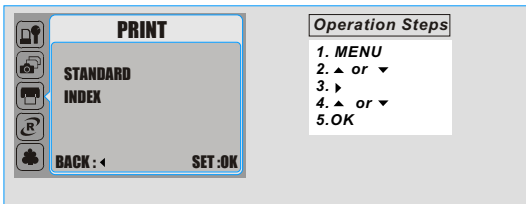
## Printer Connection (PictBridge Mode)

### » DPOF PRINT



- This allows you to directly print the files with DPOF information.
- ✦ [YES]: Directly print the file with the DPOF information
  - ✦ [NO] : Cancel the printing
  - ✦ Depending on the manufacturer and printer model, some menus may not be available.
  - ✦ If the camera is connected to a printer without supporting the DPOF, the menu is still displayed but the function is not available.

### » Printing Pictures

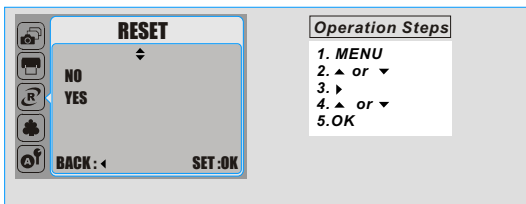


- ✦ [STANDARD]: Print the pictures stored in the memory card in set numbers. Each picture will be printed on one piece of paper.
- ✦ [INDEX]: Print multiple images on one sheet of paper.
- ✦ Please press down OK Button to stop printing.



## Printer Connection (PictBridge Mode)

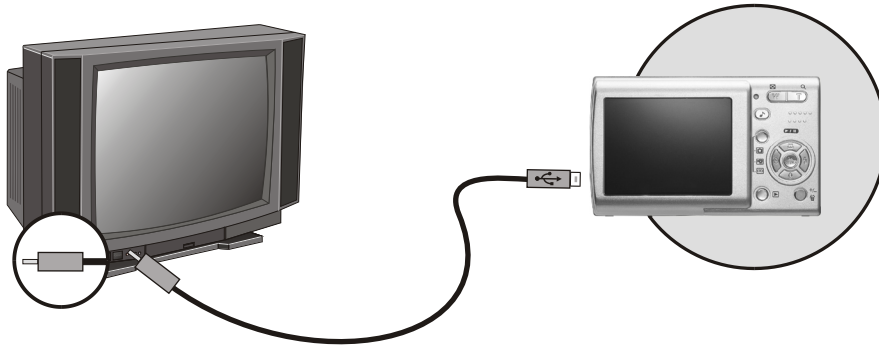
### » Reset



- This function allows you to initialize user-changed configurations.
- ✦ [YES]: All print and image settings will be reset back to the default.
  - ✦ [NO]: Settings will not be reset.
  - ✦ All default printer settings are based on the those of the printer manufacturer.



## TV Connection



- ✦ Connect the USB/Video connector of the camera to video input ports of the TV set with the supplied Video/USB Cable.
- ✦ Turn on the TV and switch the TV/Video switch to A/V mode.
- ✦ Power on the camera and then switch to the Playback Mode.
- ✦ Press down the LEFT or RIGHT direction Button to go to the next or last image for TV reviewing.

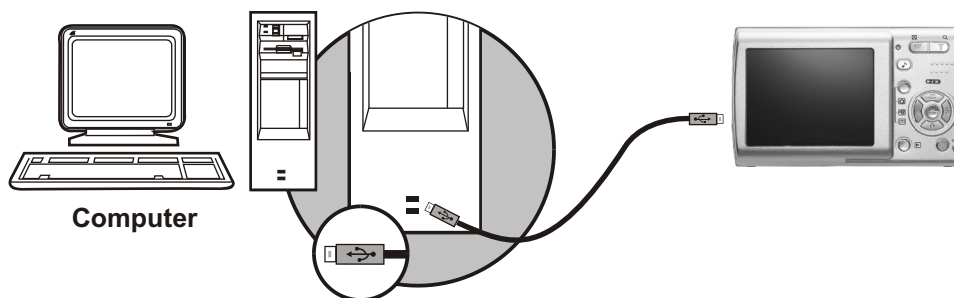
48



## PC Connection

### ▶ How to Connect with a Computer

#### ▶ Computer / Notebook Connection



- ✦ When the USB/Video Cable is in connection with the computer while the camera is on, the camera will automatically go to the PC Mode from any working mode and turn off TFT LCD monitor.
- ✦ In this Mode, you can download images to your computer .

49

122 mm+-2

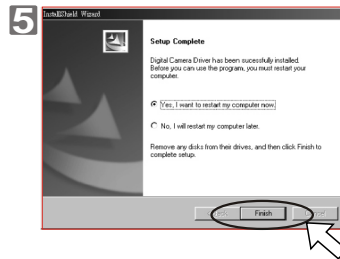
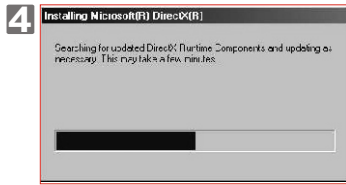
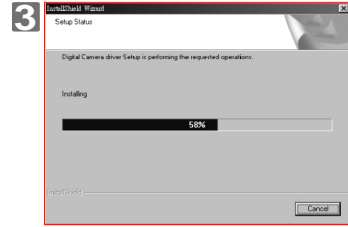
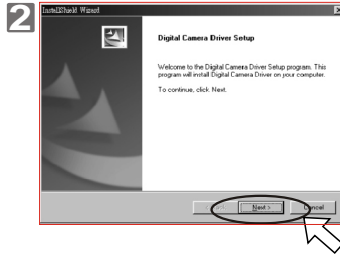
122 mm+-2



# PC Connection

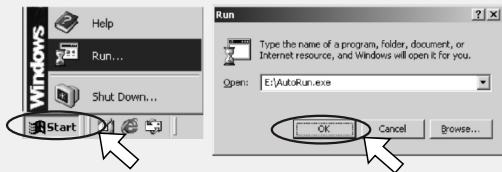
## ▶ Installing the Camera's Driver

» Under Microsoft Windows 98SE



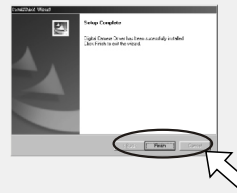
# PC Connection

### Note



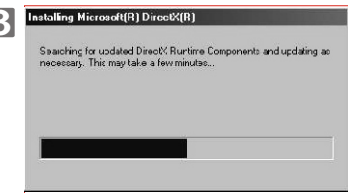
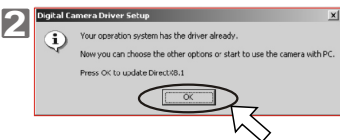
If the auto run program fails under certain situation, please go to the Start Menu, click "Run" and key in "CD-ROM Drive:\AutoRun.exe" and then click "OK" Button.

### Note



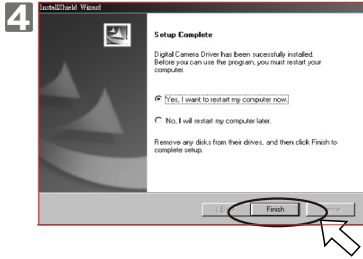
If the computer has been installed with DirectX 8.0 or later already, the installation procedure will skip above step 4 and go to the following window directly completing the driver installation.

» Under Microsoft Windows 2000

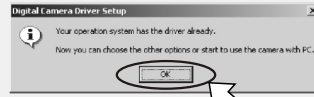




# PC Connection

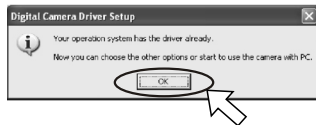


### Note



Having DirectX 8.0 or later already, the computer will skip the installation procedure from step 2 above and go to the following window directly. Please complete the driver installation with a "OK" Click.

### Under Microsoft Windows ME / XP



The camera's driver is not required under Windows ME and Windows XP. Please go to page 52 for installing of Ulead Photo Explorer or go to page 57 for downloading the stored image(s) onto the PC. Please click "OK", if the below window prompts.

### Under Mac 9.X or later

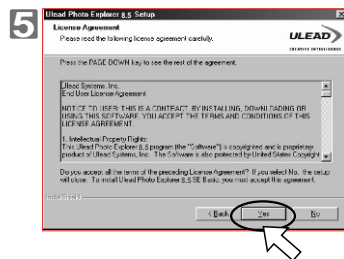
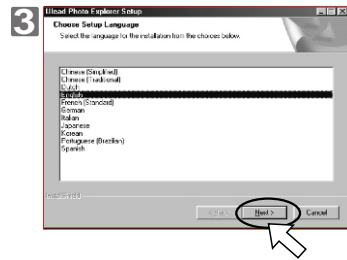
This camera, supporting only Mac 9.X or later versions, does not require any driver installation. Please refer to Page 48 for installing of Ulead Photo Explorer or Page 54 for downloading the stored images onto the PC.



# PC Connection

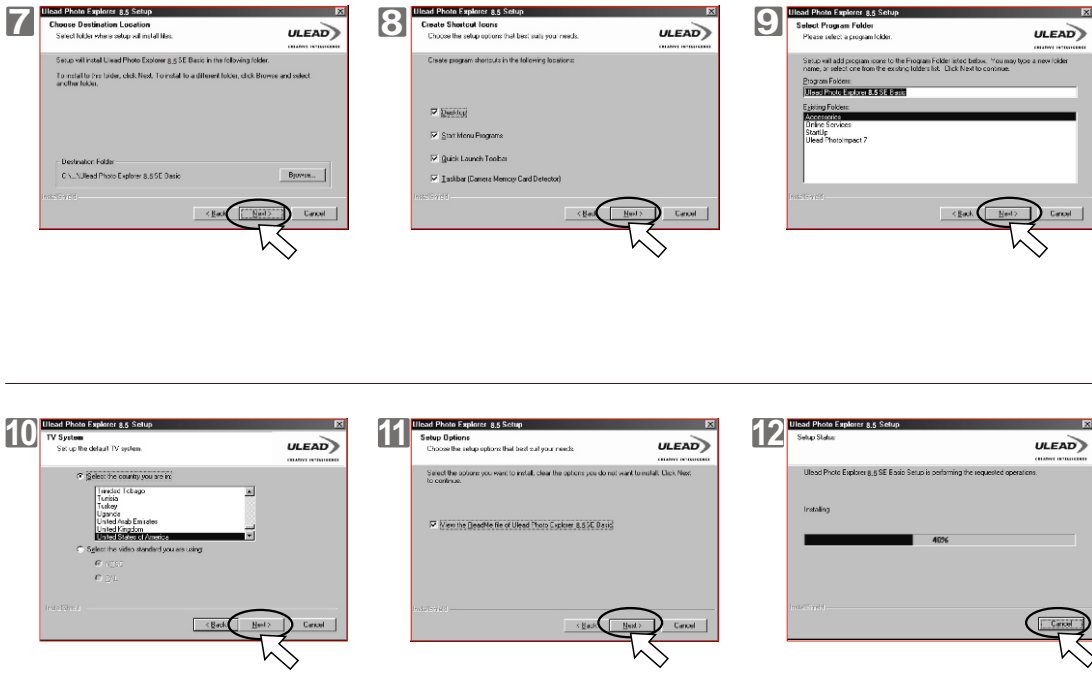
## Installing Ulead Photo Explorer

### Under Windows Operating System (Windows 98SE/2000/ME/XP)

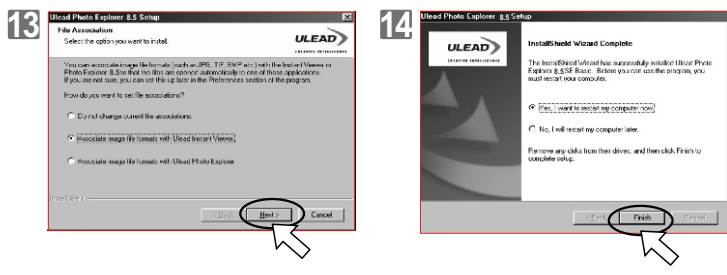




# PC Connection



# PC Connection

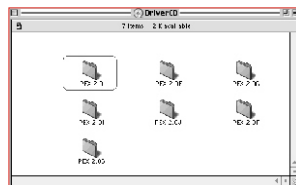


## Under Macintosh Operating System (Mac 9.X or later)

**Step 1:**  
Turn on the computer.

**Step 2:**  
Insert the CD into the CD-ROM Drive. The computer will create an icon named "Driver CD" on the desktop.

**Step 3:**  
Double clicks on the icon and choose the language you prefer by double clicking on one of the folders below.

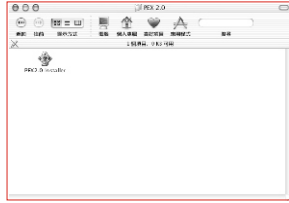


- PEX 2.0: English
- PEX 2.0F: French
- PEX 2.0G: German
- PEX 2.0I: Italian
- PEX 2.0J: Japanese
- PEX 2.0P: Portuguese
- PEX 2.0S: Spanish



# PC Connection

**Step4:**  
Select PEX2.0 Installer to install.



**Step5:**  
Press Continue for the next step.



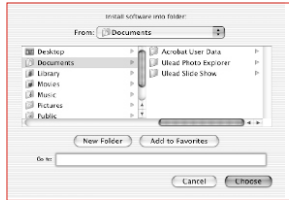
**Step6:**  
A welcome screen will jump out. Please press Continue for the next step.



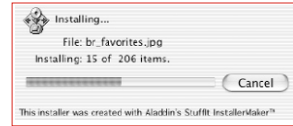
**Step7:**  
Please read through the contract. If you agree with the contract, please press Agree. If not, please press Disagree, and installation will be cancelled simultaneously.



**Step8:**  
Select the folder you just installed, and press Choose for the next step.

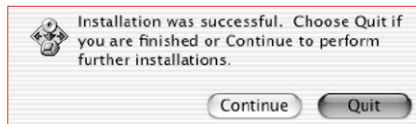


**Step9:**  
PEX2.0 will now start to install.



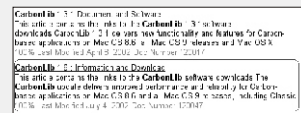
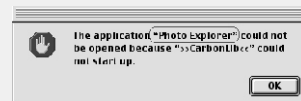
# PC Connection

**Step10:**  
Installation completed, please press Quit to exit.



**Note**  
If a warning window shows up please visit Apple's official web-site <http://kbase.info.apple.com> to download the latest version of CarbonLib.

- a. Key in "CarbonLib" in the searchbar and click "Search" button.
- b. Download the latest version of CarbonLib.
- c. Reboot the computer.
- d. Go to the desktop and double click on the icon "Ulead Photo Explorer" to start Ulead Photo Explorer.





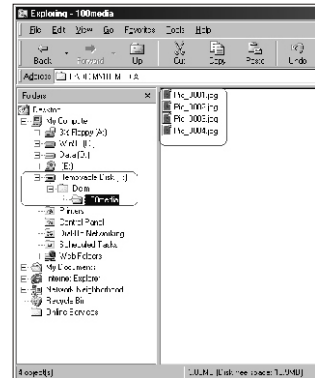
## PC Connection

### Downloading the Image(s)

Under Windows Operating System (Windows 98SE/2000/ME/XP)

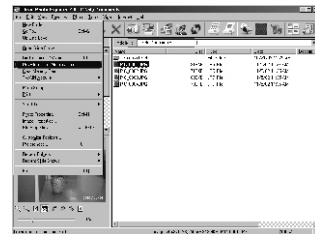
#### Downloading Image(s) From Removable Disk

1. Turn on the PC.
2. Switch on the camera.
3. Connect the camera to the PC by USB cable under any working mode. Please make sure the USB cable is well connected to both the PC and camera.
4. When the USB cable is connected to the PC, there will be a new hard disk named Removable Disk showing on the computer.
5. The stored "image(s) can be found in" RemovableDisk\Dcim\100media .
6. View the image with a double-clicks.



#### Downloading Image(s) Through Ulead Photo Explorer

1. Connect the camera to the PC by USB cable under any working mode. Please make sure the USB cable is well connected to both the PC and camera.
2. Start Ulead Photo Explorer 8.5 SE Basic.
3. Click "File\Download From Memory Card" to get the stored image(s).

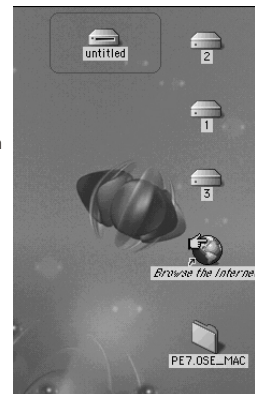


## PC Connection

Under Macintosh Operating System (Mac 9.X or later)

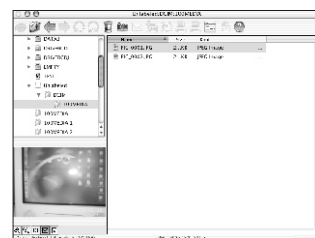
#### Downloading Image(s) From Removable Disk

1. Turn on the PC.
2. Switch on the camera.
3. Connect the camera to the PC by USB cable under any working mode. Please make sure the USB cable is well connected to both the PC and camera.
4. When the USB cable is connected to the PC, there will be a new icon named "untitled" showing on the computer.
5. Double click on the icon.
6. The stored image(s) can be found in the folder of DCIM\ 100MEDIA\.
7. View the image(s) with double-clicks.



#### Downloading Image(s) Through Ulead Photo Explorer

1. Turn on both the PC and switch on the camera. Connect the camera to the PC by USB cable and a new disk such as "Unlabeled" will be created automatically.
2. Start with Ulead Photo Explorer 8.5 SE Basic. The stored image(s) can be found in the folder of DCIM\ 100MEDIA\ . Please view the image(s) with double-clicks.





## Error Message Table

Messages	Causes	Solutions
<b>CARD FULL</b>	There is insufficient card memory capacity for storing an image.	Delete the stored image(s) in the memory card or insert a new memory card.
<b>MEMORY FULL</b>	There is insufficient internal memory capacity for storing an image.	Delete the stored image(s) in the flash memory.
<b>CARD LOCKED (ICON BLINKING)</b>	The SD card is under protection.	Set the card protection switch at non-protection position.
<b>LOCK</b>	The Image can not be deleted under protection.	Unlock the protected image.
<b>NO IMAGE</b>	There is no image stored in the memory card or built-in flash memory.	Please take pictures or record movie clips.
<b>FILE ERROR</b>	File format error.	Insert a new SD/MMC card or format the media.
<b>MEMORY ERROR</b>	Memory is damaged or fails.	Format the media.
<b>CARD ERROR</b>	Card is damaged or fails.	Insert a new SD/MMC card
<b>LOW BATTERY ! (ICON BLINKING)</b>	Battery power is drained.	Insert new batteries.
<b>LOW LIGHT!</b>	The environment is too dark in Flash off or "Night Scene".	Set the flash mode at Auto Flash or Fill-in Flash.
<b>HAND SHAKE ICON</b> 	The environment is too dark in Flash off or "Night Scene".	Avoid shake. Set the flash mode at Auto Flash or Fill-in Flash.
<b>NO PAPER!</b>	Paper has run out.	Please put more paper in the paper tray of the Printer.



## Specifications

Specifications		
Image Sensor	Type	1/2.5" CCD
	Effective Pixels	Approx. 6.186 mega pixels (2864X2160)
Lens	Total Pixels	Approx. 6.369 mega pixels
	Focal Length	Wide: 5.8 mm, Tele: 17.4mm (35mm film equivalent: 35-105mm)
	F No.	Wide: F2.8, Tele: F4.9
Digital Zoom	Capture Mode	5x, Play Mode: 2-8x (based on different image size settings)
	2.5" color TFTLCD	
LCD Display		
Viewfinder	Optical Viewfinder	No
Focusing	Type	Auto focus with 3.0x optical zoom
	Range	Macro mode: 5cm-80cm, Normal: 80cm to infinity
Shutter	Type	Mechanical shutter and electrical shutter
	Speed	Normal: 2 sec. - 1/1500 sec. Night Scene: 8 sec. - 1/1500 sec.
Exposure	Control	Programmed AE
	Compensation	±2EV (0.5EV / step)
	ISO Equivalent	Auto, 100, 200, 400
Flash	Modes	Auto/Auto&Red-eye Reduction/Slow sync/Fill-in/off
	Range	0.2 - 3.0m. Wide mode (full charging time: less than 5 sec.)
White Balance		Auto/Daylight/Cloudy/Fluorescent/Tungsten/Sunset/Custom
Shooting	Still Image	Modes: Single image, Continuous Shooting, AEB
	Live View	Max. 30 fp with normal light level
	Movie Clip	Size Support: 640x480, 320x240 with audio (Quality support: 24 fps and 15fps)
	Effect	B/W, Normal, Sepia, RGB custom
	Sharpness	Soft, Normal, Vivid
Metering		Multi / Spot
	Photo Frame	9 options
Self-timer		10 sec., 2 sec., Double with LED Indicator
Voice Recording		Yes
Speaker		Yes
Storage	Media	Internal memory: 32MB Flash Memory External memory: Supports SD/MMC cards
	File Format	Still image: JPEG EXIF2.2, DCF1.1, DPOF1.1, Movie Clip: AVI with audio
	Image Size	[8.0M]: 3264x2448 via interpolation, (6M): 2816x2112, (5M): 2560 x 1920, (4M): 2304 x 1728, (3M): 2048x1536, (2M): 1600x1200

PictBridge (Direct Printing)	Compatible	
Digital Music Player	Yes	
Playback Function	Single Image / AVI Play / MP3 and Wav Play / Thumbnails / Slide Show	
Supports Editing Functions	Trimming, Rotation (not for 8.0MP)	
Supports Gaming	Yes	
Interface	Digital output connector: USB 2.0 High-Speed (Max. 480Mb/s). Other interface: MIC-in, Speaker, Ear-phone jack and Video-out (Use same connector as USB).	
Power Source	NP40 Li-Ion battery with external charger	
Dimensions (WxHxD)	93.5 x 56 x 23 mm (Body: 20.8mm)	
Weight	Approx. 117 g (without battery and memory card)	
Software	Camera Driver	Mass Storage Driver for Windows 98SE (Window 2000/ME/XP, Mac OS 9.2 or Later don't need driver)
	Application	Ulead Photo Explorer 8.5 SE Basic / Explorer 2 (MAC version)
System Requirements		
For Windows	PC with processor better than MMX Pentium 233MHz (XP: Pentium 1130MHz) Windows 2000/ME/XP Minimum 32MB RAM (XP: 128MB) 140MB of available hard-disk space USB port, CD-ROM Driver 800x600 pixels, 16-bit color display compatible monitor	
For Macintosh	Power Mac G3 or later Mac OS 9.2-10.3 Minimum 64MB RAM 110MB of available hard-disk space USB port, CD-ROM Driver QuickTime 6.01 or later for Movie Clip	

"Specifications and product design are subject to change without any notice for further improvement."



## Appendix

### ▶ About Ulead Photo Explorer

#### ▶ Software license

The software mentioned in this manual is furnished under a License Agreement which is included with the product. This Agreement specifies the permitted and prohibited uses of the product.

#### ▶ Licenses and trademarks

ICI Library 1991-1992 C-Cube Microsystems. Ulead Systems, Inc. And the Ulead logo are trademarks of Ulead Systems, Inc. All other product names and any registered and unregistered trademarks mentioned in this manual are for identification purposes only and remain the exclusive property of their respective owners.

#### ▶ Technical supports

Registered users are entitled to Ulead technical support. This Web site has valuable up-to-date information about Photo Explorer, other Ulead products, and free downloads. Visit our Website at [www.ulead.com](http://www.ulead.com), or send an e-mail at [support@ulead.com.tw](mailto:support@ulead.com.tw).

#### Headquarters: Ulead Systems, Inc.

[Http://www.ulead.com.tw](http://www.ulead.com.tw)  
E-mail: [info@ulead.com.tw](mailto:info@ulead.com.tw)

#### Japan: Ulead Systems, Inc.

[Http://www.ulead.co.jp](http://www.ulead.co.jp)  
E-mail: [info@ulead.co.jp](mailto:info@ulead.co.jp)

#### Europe: Ulead Systems GmbH

<http://www.ulead.de>  
<http://www.ulead.co.uk>  
<http://www.ulead.co.uk/fr>  
E-mail: [info@ulead.de](mailto:info@ulead.de)

#### North & South America: Ulead Systems, Inc.

[Http://www.ulead.com](http://www.ulead.com)  
E-mail: [info@ulead.com](mailto:info@ulead.com)

#### Asia-Pacific: Ulead System, Inc.

[Http://www.asiapac.ulead.com](http://www.asiapac.ulead.com)  
E-mail: [info@asiapac.ulead.com](mailto:info@asiapac.ulead.com)

#### China: Ulead Systems, Inc.

[Http://www.ulead.com.cn](http://www.ulead.com.cn)  
E-mail: [info@ulead.com.cn](mailto:info@ulead.com.cn)

62



## Appendix

### ▶ Things you can do in Ulead Photo Explorer 8.5 SE Basic

Here's an overview of what you can do in Ulead Photo Explorer. Refer to the chapters in this user guide for more details.

#### Acquire images

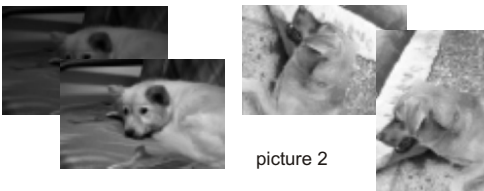
Acquire images from digital cameras, scanners, or memory card readers. (picture 1)



picture 1

#### Adjust images

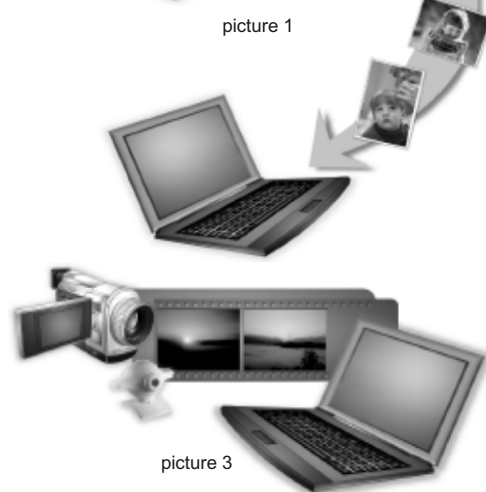
Make adjustments to images, such as straighten, rotate, crop, balance color, remove red eye, etc. Image adjustments can be applied to multiple images at one time. (picture 2)



picture 2

#### Capture and trim video

Capture video clips from DV camcorders, PC cameras, WebCams, motion cameras or capture boards. Later, you can trim, convert and optimize video clips. (picture 3)



picture 3

63



# Appendix

### Browse thumbnails

Ulead Photo Explorer displays files as thumbnails, allowing you to visually browse through images and media files. (picture 4)



picture 4



picture 5

### Preview images and other media

Instantly preview images, video and audio files in Photo Explorer without actually opening them. (picture 5)



picture 6

### View images

Display images in larger views by switching to Viewer mode or opening images in Ulead Instant Viewer. (picture 6)



# Appendix

### Print images in various layouts

Output single-image prints, greeting cards, or print images in different photo sizes. You can also print an index sheet of thumbnails for your image collection. (picture 7)



picture 7

### Create slideshows

Assemble images, video and audio files into a multimedia slideshow. Apply cool transition effects to your slideshow. (picture 8)



picture 8

### Output Web thumbnails and Web slideshows

Create Web photo albums and Web slideshows ready to be uploaded to the Internet. (picture 9)



picture 9

### Share on the Internet

To share selected images on the Web, upload them to iMira.com, Ulead's free image sharing Web site. (picture 10)



picture 10

165 mm+-2



**Memo**

122 mm+-2

66



**Memo**

122 mm+-2

67

165 mm+-2



122 mm+-2

68



122 mm+-2

